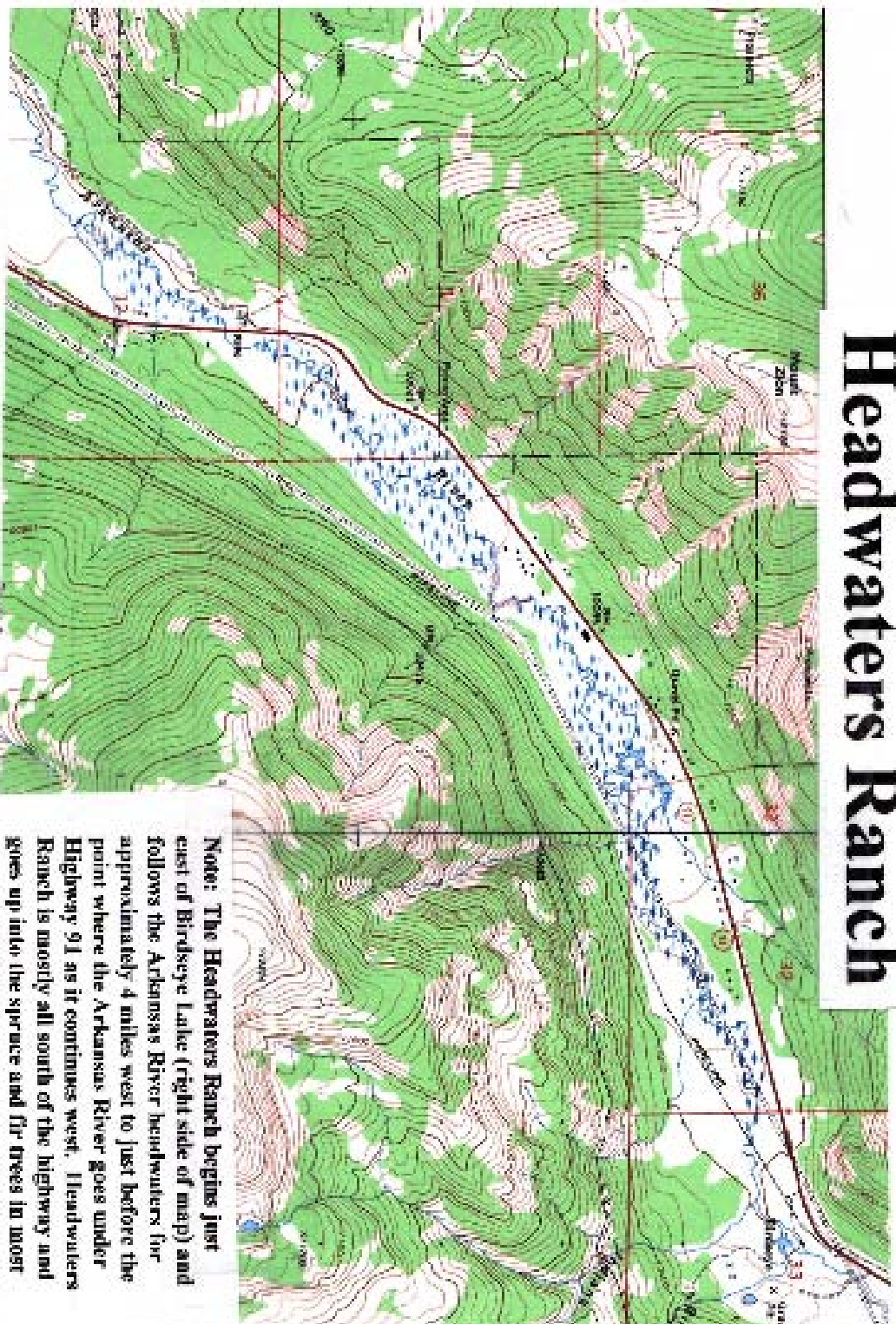


# Headwaters Ranch



**Note:** The Headwaters Ranch begins just east of Birdseye Lake (right side of map) and follows the Arkansas River headwaters for approximately 4 miles west to just before the point where the Arkansas River goes under Highway 91 as it continues west. Headwaters Ranch is mostly all south of the highway and goes up into the spruce and fir trees in most areas--providing some stunning building sites.